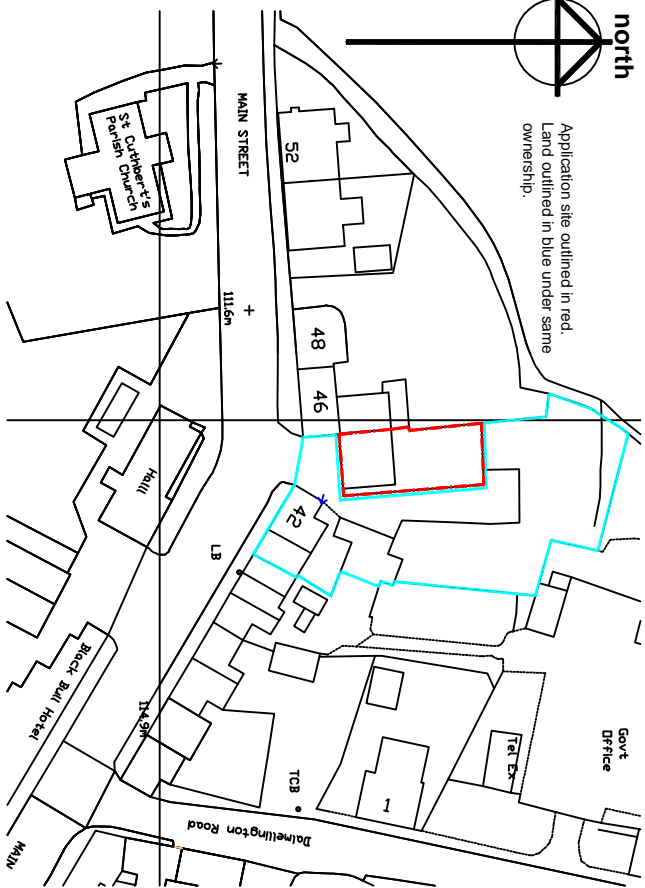




Application site outlined in red.
Land outlined in blue under same ownership.



Location Plan @ 1:1250

Notes:

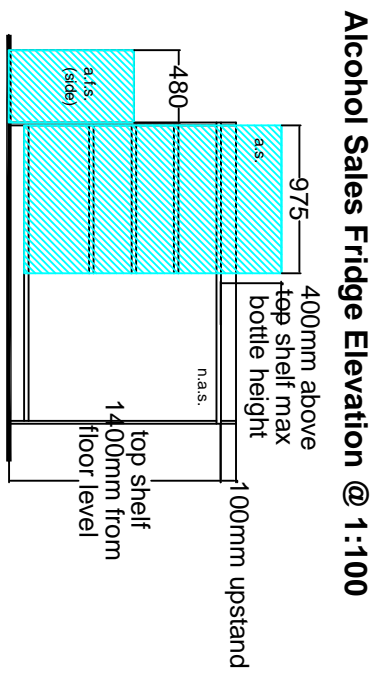
Customers/members of the public only permitted access to the Shop - all other areas are staff only.

Male & female staff w.c. & w.i.n.b. with hot & cold water supply.

Staff 1 area includes sink with hot & cold water supply.

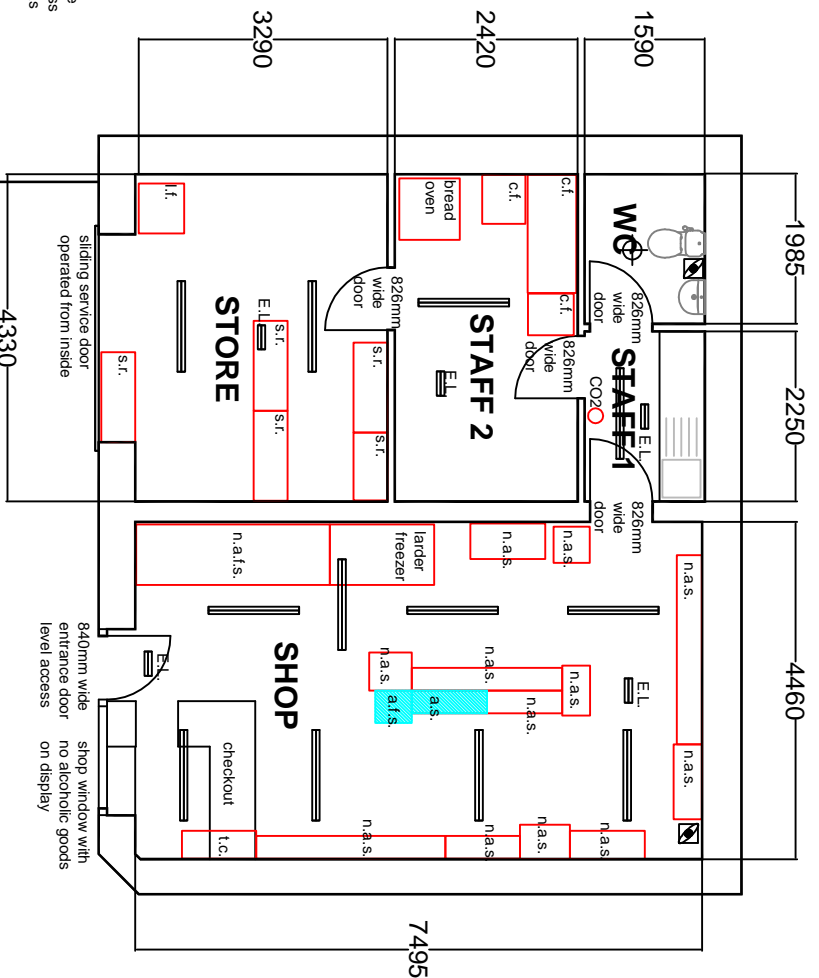
Alcohol sales areas visible from checkout/counter. Adjustable shelving in fridge and floor unit to be adjusted for bottle heights.

Total proposed Alcohol Sales Area = 2.15 square metres (or 0.7 cubic metres)



Alcohol Sales Fridge Elevation @ 1:100

Alcohol Sales Shelf Unit Elevation @ 1:100



Floor Plan @ 1:100

Legend

- a.s. alcohol sales (300mm deep shelves)
- a.f.s. alcohol fridge sales (700mm deep shelves)
- E.L. emergency light
- l.f. larder/fridge
- s.r. storage rack
- c.f. chest freezer
- n.a.s. non alcohol sales
- n.a.f.s. non alcohol fridge sales
- CO2 CO2 fire extinguisher
- l.b. locked tobacco cabinet behind checkout
- ☒ wall mounted extractor fan
- ▬ fluorescent light fitting
- ⊕ batten light fitting

FORECOURT
(leading to Main Street)

rev A 26.10.20 Alcohol Sales area figures added

K i r k t o n D e s i g n
52 Main Street
Stratton
KA19 7NF
t: 01655 770270
e: geeuu@me.com

client Stratton Village Co-operative
project Redevelopment of Stratton Stores
drawing Ground Floor Plan Section 50 Layout
drg. no. 2020/04/01A
date October 2020
scale as noted @ A4