

SITE PLAN 1/200

TEMPLEHILL

**LEGEND**

GENERAL FIRE ACTION NOTICE	N1
STAFF FIRE ACTION	N2
KEEP LOCKED SHUT NOTICE	N3
EMERGENCY LIGHTING	EL
SMOKE DETECTOR	SD
HEAT DETECTOR	HD
DRY POWDER EXTINGUISHER	DP
FOAM EXTINGUISHER	F
WATER EXTINGUISHER	W
FIRE BLANKET	FB
FIRE ALARM CALL POINT	●
FIRE ALARM SOUNDER	⤵
ILLUMINATE EXIT SIGN	IES
CARBON DIOXIDE EXTINGUISHER	CD
CHILDRENS AREA	
GAMING MACHINE	GM

REV	DESCRIPTION	DATE	BY
-----	-------------	------	----

PROJECT  
ANCHORAGE HOTEL  
TEMPLEHILL TROON

TITLE  
SITE PLAN

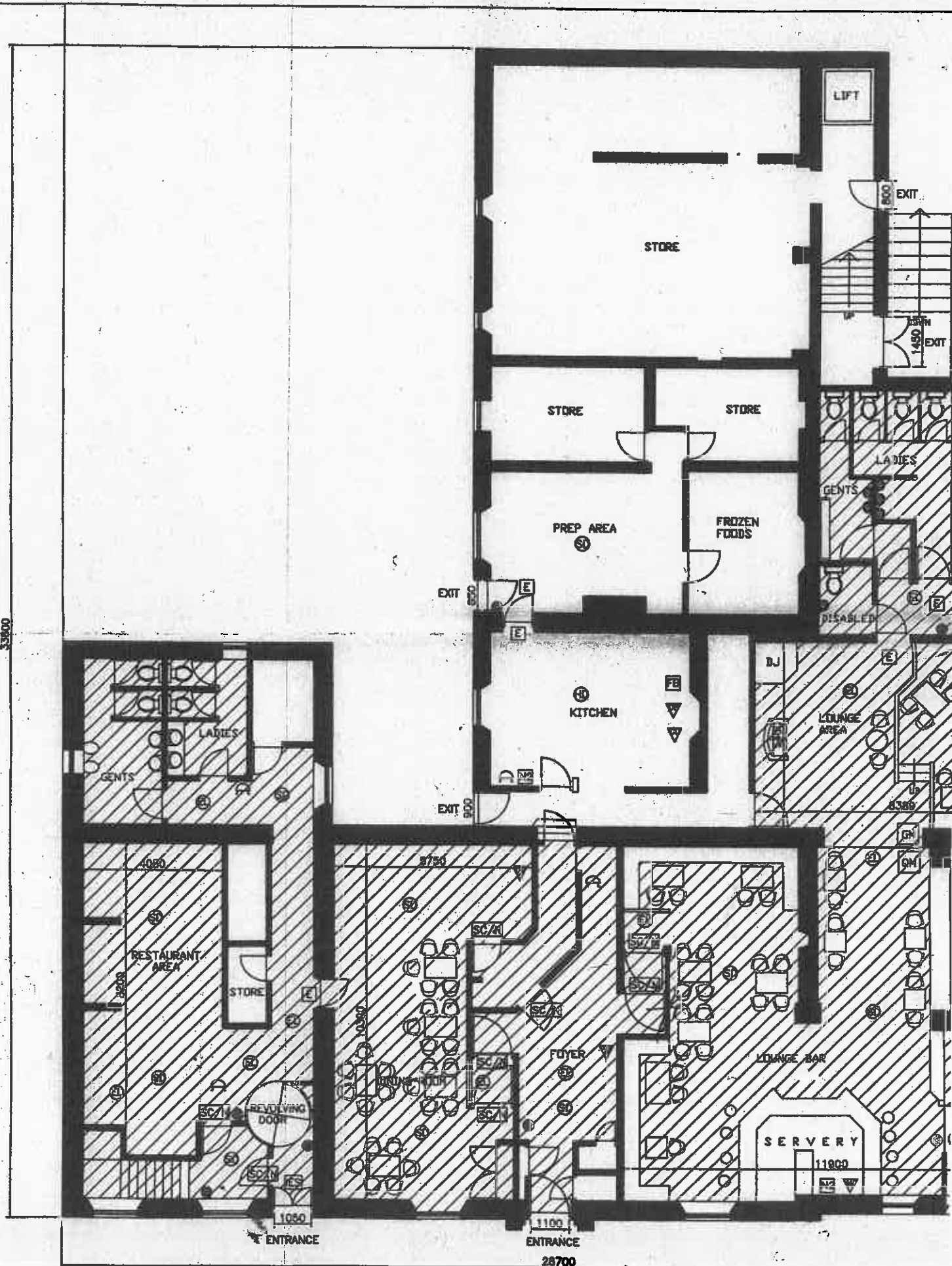
**J. REID & SON**  
ARCHITECTURAL SERVICES

197 MAIN ST  
PRESTWICK  
KA9 1LH  
Tel.: 01292 470331

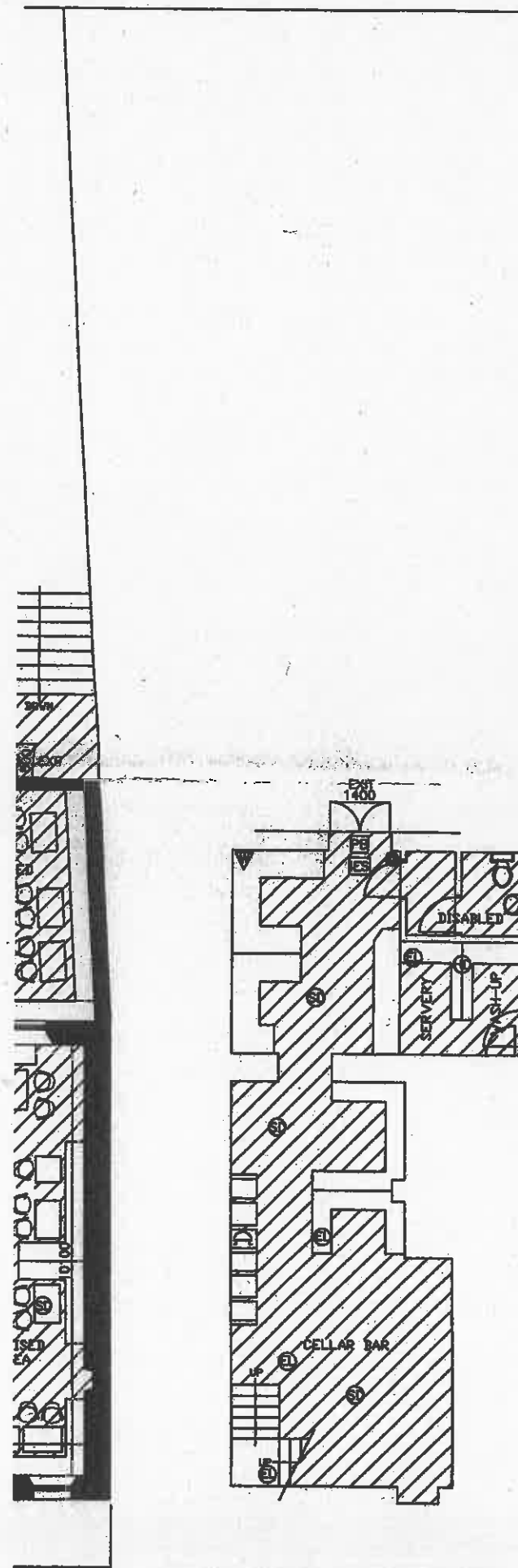


SCALE			
1/200			

DATE	JOB NO.	DRG NO.	REV
17/04/08			



GROUND FLOOR PLAN 1/100



LOWER GROUND FLOOR PLAN 1/100

FIRE FIGHTING / PREVENTION KEY

- GENERAL FIRE ACTION NOTICE [Symbol]
- STAFF FIRE ACTION NOTICE [Symbol]
- KEEP LOCKED SHUT NOTICE [Symbol]
- EMERGENCY LIGHTING [Symbol]
- SMOKE DETECTOR [Symbol]
- HEAT DETECTOR [Symbol]
- DRY POWDER EXTINGUISHER [Symbol]
- FOAM EXTINGUISHER [Symbol]
- WATER EXTINGUISHER [Symbol]
- FIRE BLANKET [Symbol]
- FIRE ALARM CALL POINT [Symbol]
- FIRE ALARM BOUNDER [Symbol]
- ILLUMINATED EXIT SIGN [Symbol]
- CARBON DIOXIDE EXTINGUISHER [Symbol]
- CHILDRENS AREA [Symbol]
- GAMING MACHINE [Symbol]
- SELF CLOSING DOOR [Symbol]
- SELF CLOSING DOOR WITH FIRE DOOR NOTICE KEEP SHUT NOTICE [Symbol]
- FIRE RESISTING GLAZING (30/60 MINUTES) [Symbol]
- PUSH BAR TO OPEN (30MM) [Symbol]
- GRAPHIC/PICTORIAL EXIT SIGN 75MM [Symbol]
- GRAPHIC/PICTORIAL EXIT SIGN WITH DIRECTION ARROW 75MM [Symbol]

PROJECT  
ANCHORAGE HOTEL  
TEMPLEHILL TROON

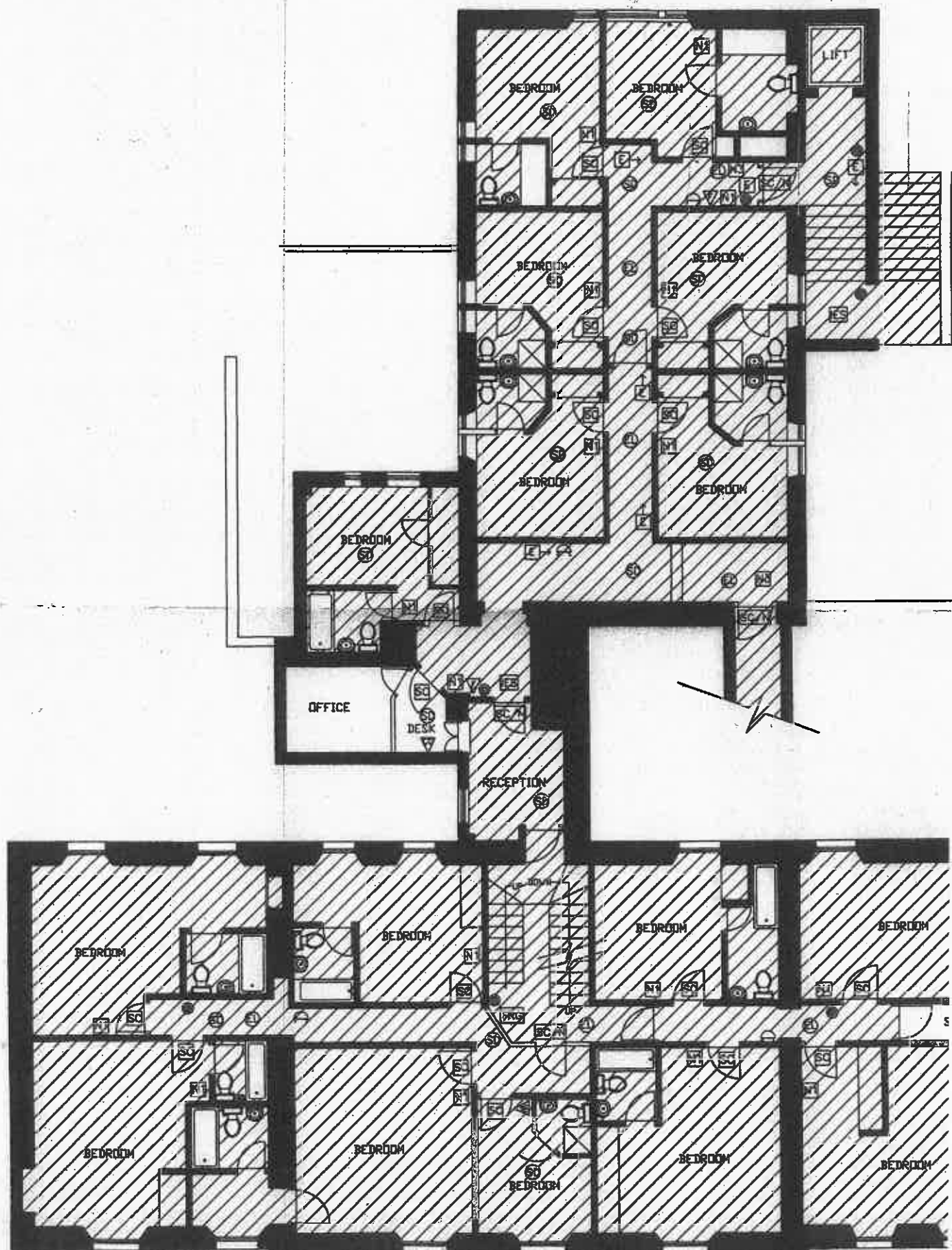
TITLE  
EXISTING FLOOR PLANS

**J. REID & SON**  
ARCHITECTURAL SERVICES

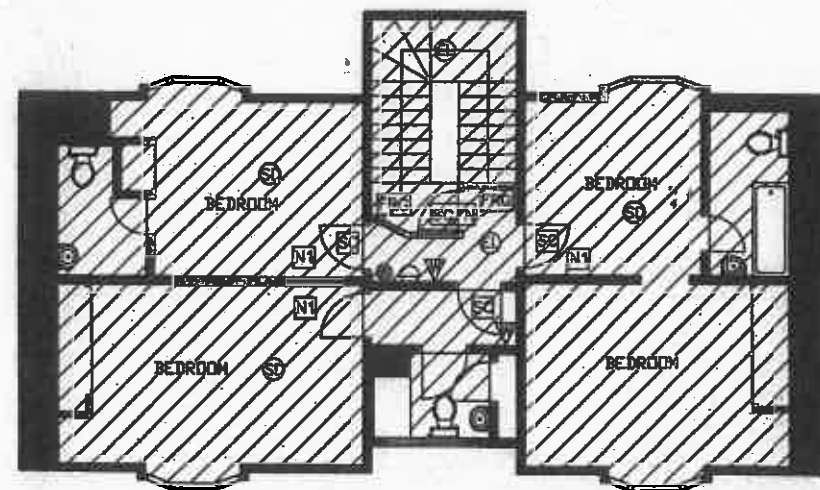
197 MAIN ST  
PRESTWICK  
KA9 1LH  
Tel.: 01292 470331



SCALE	1:100		
DATE	JOB NO.	DRG NO.	REV
17/04/08			
Drawn by	Passed by	Issued for	
JAMES REID			









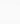

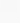
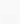


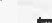


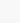

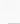




FIRST FLOOR PLAN 1/100



SECOND FLOOR PLAN 1/100

FIRE FIGHTING / PREVENTION KEY

- GENERAL FIRE ACTION NOTICE 
- STAFF FIRE ACTION NOTICE 
- KEEP LOCKED SHUT NOTICE 
- EMERGENCY LIGHTING 
- SMOKE DETECTOR 
- HEAT DETECTOR 
- DRY POWDER EXTINGUISHER 
- FOAM EXTINGUISHER 
- WATER EXTINGUISHER 
- FIRE BLANKET 
- FIRE ALARM CALL POINT 
- FIRE ALARM SOUNDER 
- ILLUMINATED EXIT SIGN 
- CARBON DIOXIDE EXTINGUISHER 
- CHILDREN'S AREA 
- GAMING MACHINE 
- SELF CLOSING DOOR 
- SELF CLOSING DOOR WITH FIRE DOOR NOTICE KEEP SHUT NOTICE 
- FIRE RESISTING GLAZING (30/60 MINUTES) 
- PUSH BAR TO OPEN (50MM) 
- GRAPHIC/PICTORIAL EXIT SIGN 75MM 
- GRAPHIC/PICTORIAL EXIT SIGN WITH DIRECTION ARROW 75MM 

PROJECT  
ANCHORAGE HOTEL  
TEMPLEHILL TROON

TITLE  
EXISTING FLOOR PLANS

**J. REID & SON**  
ARCHITECTURAL SERVICES

197 MAIN ST  
PRESTWICK  
KA9 1LH  
Tel.: 01292 470331



SCALE 1:100	DATE 17/04/08	JOB NO.	DRG NO.	REV
Drawn by JAMES REID	Passed by	Issued for		