



WEST WING

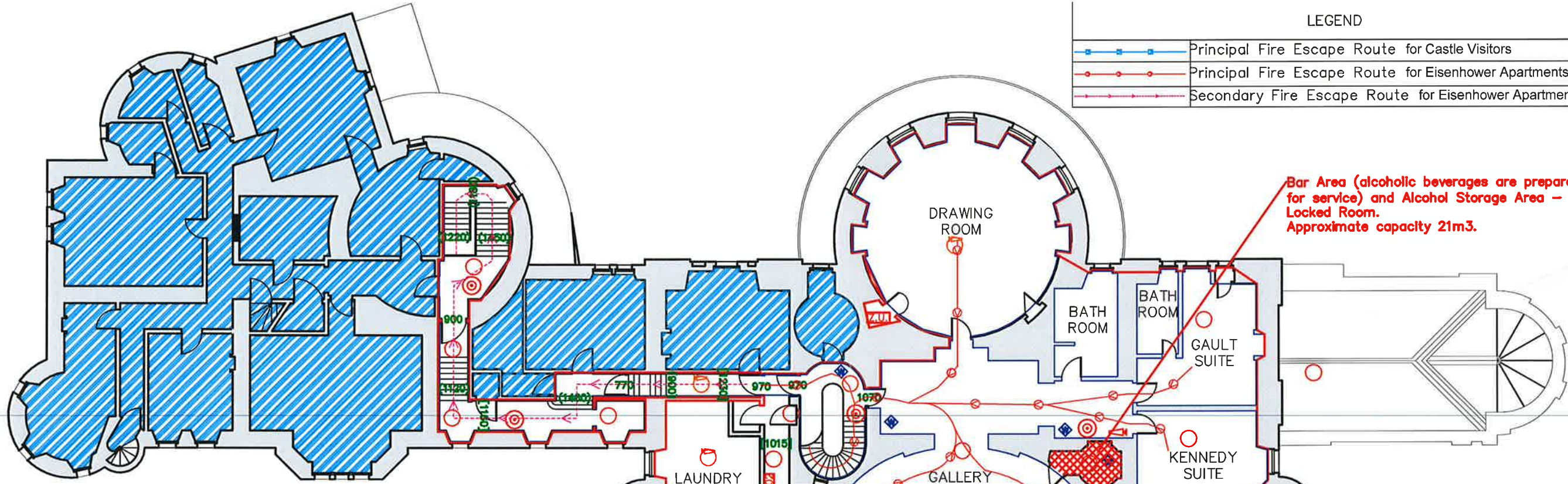


MAIN CASTLE



LEGEND

	Principal Fire Escape Route for Castle Visitors
	Principal Fire Escape Route for Eisenhower Apartments
	Secondary Fire Escape Route for Eisenhower Apartments



Bar Area (alcoholic beverages are prepared for service) and Alcohol Storage Area - Locked Room. Approximate capacity 21m<sup>3</sup>.

Alcohol Storage Area - Locked Cupboard. Approximate capacity 3.4m<sup>3</sup>.

LEGEND	
	- Aspirated smoke detector
	- Detector with loop & address
	- Detector with sounder; loop & address
	- Aspirated detector Zone Unit
	- Break Glass Call Point
	C.P. - Control Panel - Main (Fire Alarm Panel)
	R.P. - Control Panel - Repeater (Fire Alarm Panel)
	EM - Electro-magnetic door control
	- Exterior Siren or Sounder
FIRE EXIT DOOR WIDTH SCHEDULE	
	Clear opening width at doorway in mm.
	(Clear opening width between handrails in mm)
	[Clear opening width between walls in mm]
FIRE SUPPRESSION SYMBOLS	
	-Fire extinguisher (9Ltr water)
	-Fire extinguisher (2.5Kg Foam)
	-Fire extinguisher (2.5Kg CO2)
	-Fire suppression Unit
	-Fire Blanket
	- Licence Boundary
	- Childrens etc access boundary
	- Areas excluded from the application

Culzean Castle - Second Floor Plan.  
Licence Applications  
July 2015  
Scale 1:200 at A3



The National Trust  
for Scotland  
Ayrshire Properties Service Base,  
Culzean Castle & Country Park  
nr Maybole, KA19 8LE Tel: 01655 884516  
Drawing Number - FD/003





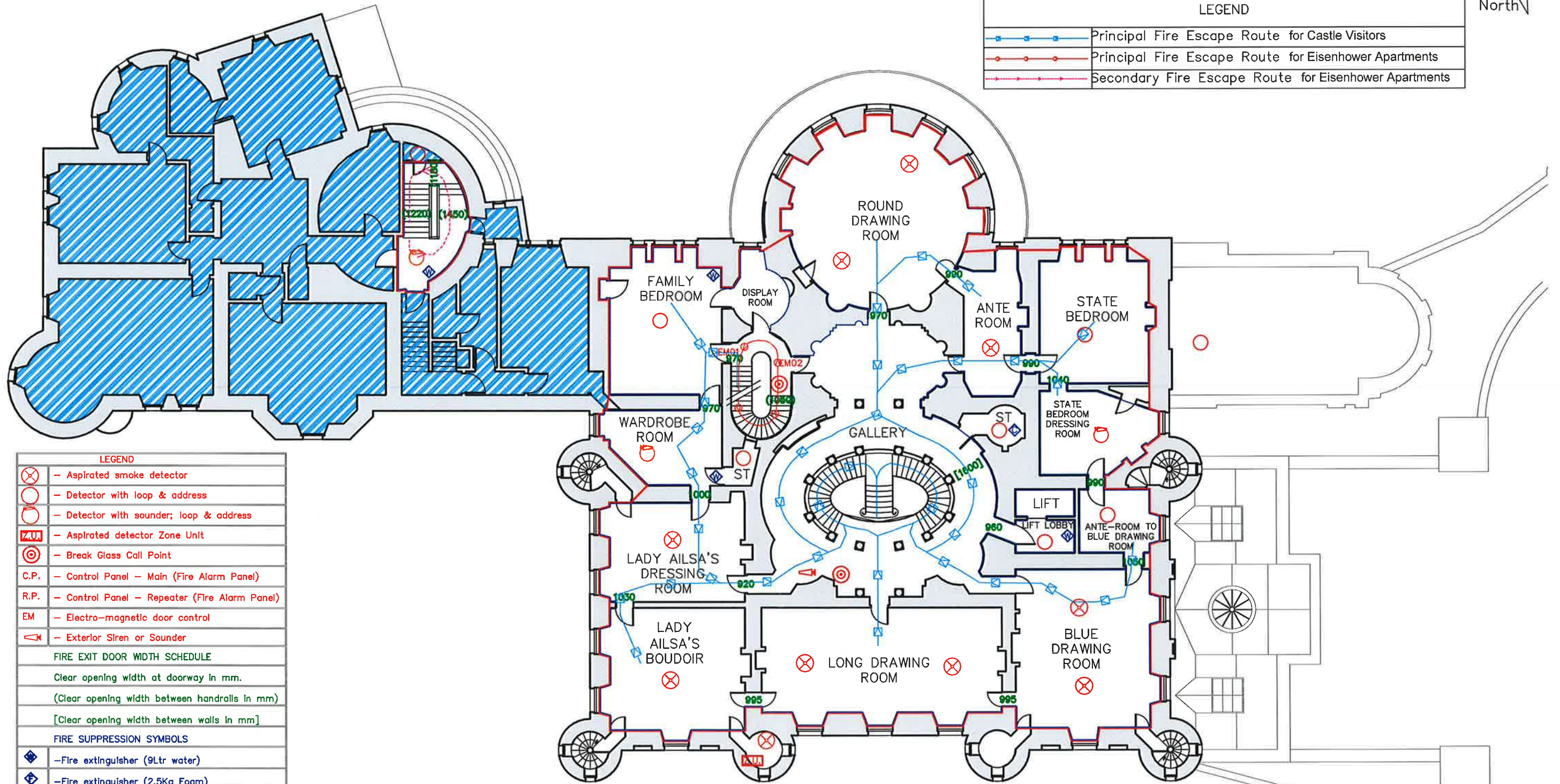
WEST WING



MAIN CASTLE



LEGEND	
	Principal Fire Escape Route for Castle Visitors
	Principal Fire Escape Route for Eisenhower Apartments
	Secondary Fire Escape Route for Eisenhower Apartments



LEGEND	
	- Aspirated smoke detector
	- Detector with loop & address
	- Detector with sounder; loop & address
	- Aspirated detector Zone Unit
	- Break Glass Call Point
	- Control Panel - Main (Fire Alarm Panel)
	- Control Panel - Repeater (Fire Alarm Panel)
	- Electro-magnetic door control
	- Exterior Siren or Sounder
FIRE EXIT DOOR WIDTH SCHEDULE	
	Clear opening width at doorway in mm.
	(Clear opening width between handrails in mm)
	[Clear opening width between walls in mm]
FIRE SUPPRESSION SYMBOLS	
	-Fire extinguisher (9Ltr water)
	-Fire extinguisher (2.5Kg Foam)
	-Fire extinguisher (2.5Kg CO2)
	-Fire suppression Unit
	-Fire Blanket
	- Licence Boundry
	- Childrens etc access boundry
	- Areas excluded from the appliaction

Culzean Castle – First Floor Plan.  
Licence Applications.  
July 2015.  
Scale 1:200 at A3



The National Trust  
for Scotland

Ayrshire Properties Service Base,  
Culzean Castle & Country Park  
nr Maybole, KA19 8LE Tel: 01655 884516  
Drawing Number - FD/002





WEST WING

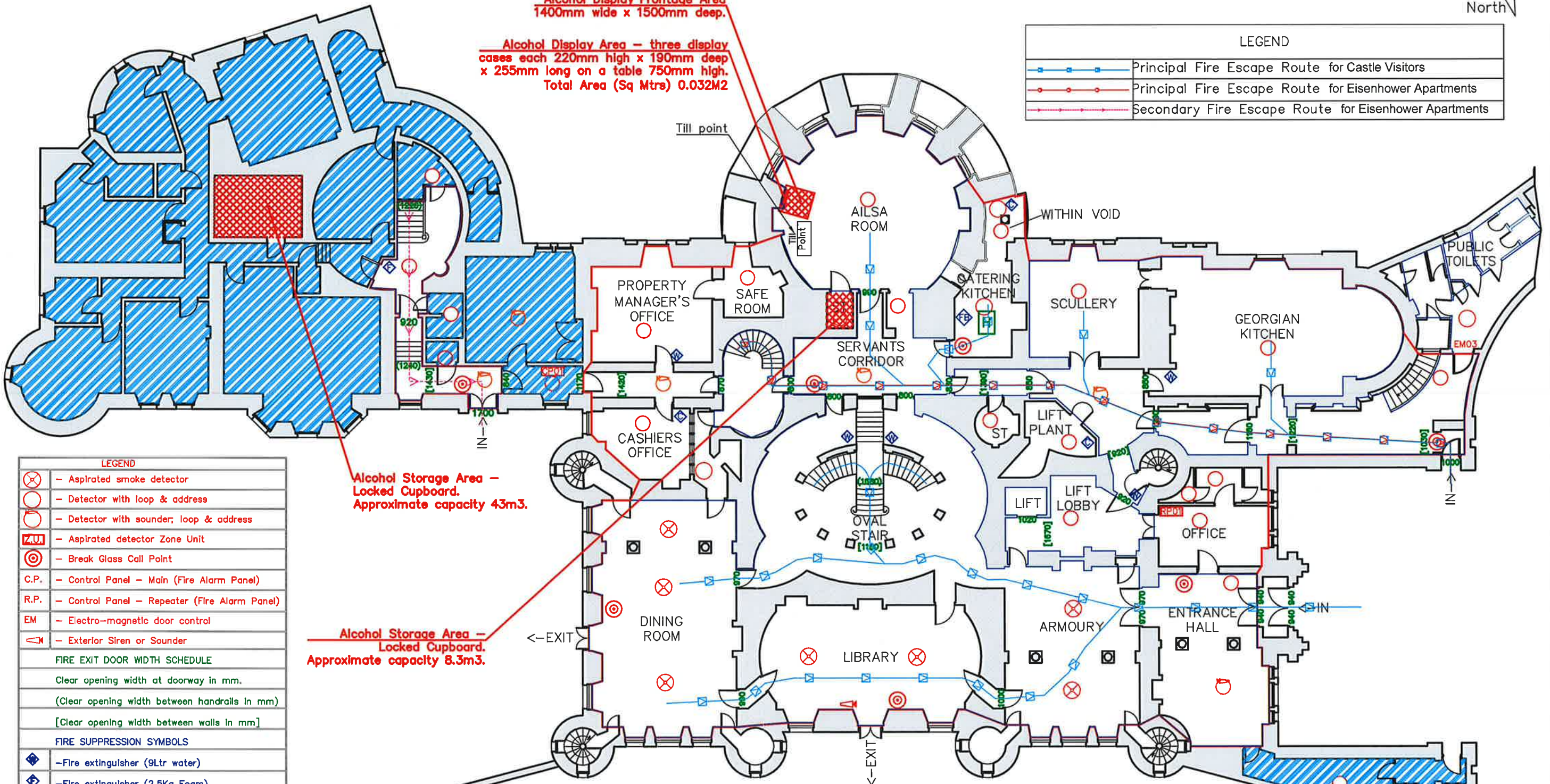
MAIN CASTLE



Alcohol Display Frontage Area  
1400mm wide x 1500mm deep.

Alcohol Display Area - three display  
cases each 220mm high x 190mm deep  
x 255mm long on a table 750mm high.  
Total Area (Sq Mtrs) 0.032M2

LEGEND	
	Principal Fire Escape Route for Castle Visitors
	Principal Fire Escape Route for Eisenhower Apartments
	Secondary Fire Escape Route for Eisenhower Apartments



Alcohol Storage Area -  
Locked Cupboard.  
Approximate capacity 43m3.

Alcohol Storage Area -  
Locked Cupboard.  
Approximate capacity 8.3m3.

LEGEND	
	- Aspirated smoke detector
	- Detector with loop & address
	- Detector with sounder, loop & address
	- Aspirated detector Zone Unit
	- Break Glass Call Point
	- C.P. - Control Panel - Main (Fire Alarm Panel)
	- R.P. - Control Panel - Repeater (Fire Alarm Panel)
	- EM - Electro-magnetic door control
	- Exterior Siren or Sounder
FIRE EXIT DOOR WIDTH SCHEDULE	
	Clear opening width at doorway in mm.
	(Clear opening width between handrails in mm)
	[Clear opening width between walls in mm]
FIRE SUPPRESSION SYMBOLS	
	- Fire extinguisher (9Ltr water)
	- Fire extinguisher (2.5Kg Foam)
	- Fire extinguisher (2.5Kg CO2)
	- Fire suppression Unit
	- Fire Blanket
	- Licence Boundry
	- Childrens etc access boundry
	- Areas excluded from the application

Culzean Castle - Ground Floor Plan.  
Licence Applications  
July 2015  
Scale 1:200 at A3



The National Trust  
for Scotland  
Ayrshire Properties Service Base,  
Culzean Castle & Country Park  
nr Maybole, KA19 8LE Tel: 01655 884516  
Drawing Number - FD/001

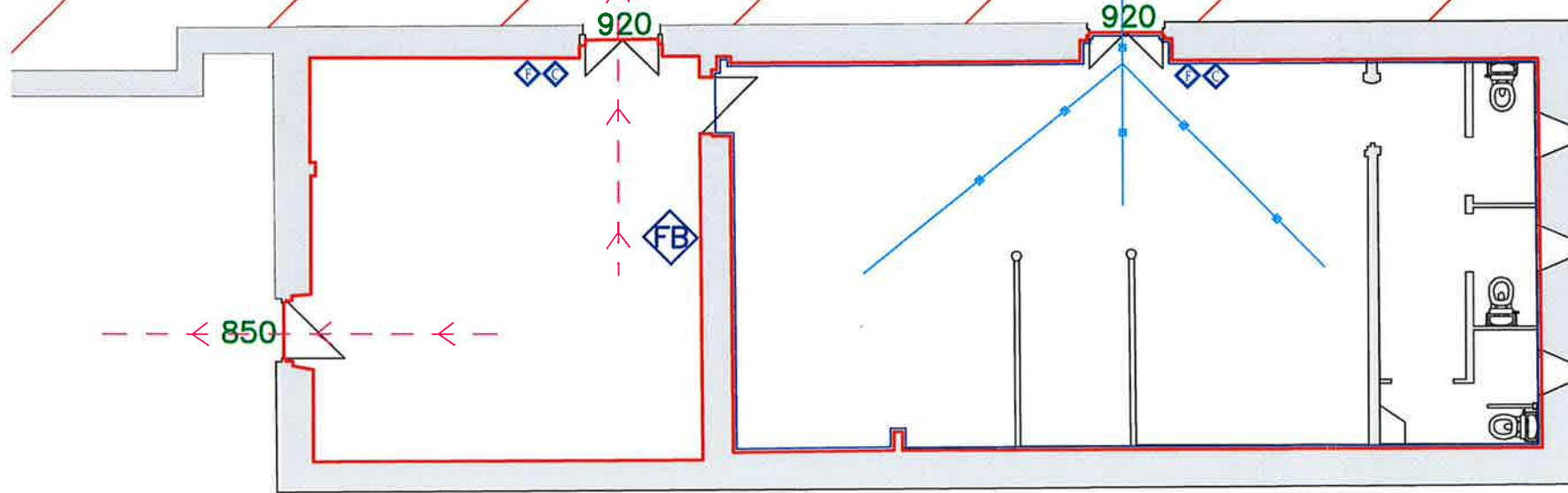


LEGEND	
	- Aspirated smoke detector
	- Detector with loop & address
	- Detector with sounder, loop & address
	- Aspirated detector Zone Unit
	- Break Glass Call Point
	- Control Panel - Main (Fire Alarm Panel)
	- Control Panel - Repeater (Fire Alarm Panel)
	- Electro-magnetic door control
	- Exterior Siren or Sounder
FIRE EXIT DOOR WIDTH SCHEDULE	
	Clear opening width at doorway in mm.
	(Clear opening width between handrails in mm)
	[Clear opening width between walls in mm]
FIRE SUPPRESSION SYMBOLS	
	- Fire extinguisher (9Ltr water)
	- Fire extinguisher (2.5Kg Foam)
	- Fire extinguisher (2.5Kg CO2)
	- Fire suppression Unit
	- Fire Blanket
	- Licence Boundary
	- Childrens etc access boundary

LEGEND	
	Principal Fire Escape Route
	Secondary Fire Escape Route

PROPOSED EXTERNAL LICENCE AREA

NOTE: it is proposed to install a Category 'M' Fire Detection System within the OSCH during 2015.



Location Plan  
Scale 1:1250



Old Stables Coffee Shop – Floor Plans.  
Licence Applications – Fire Detection  
July 2015  
Scale 1:100 at A3



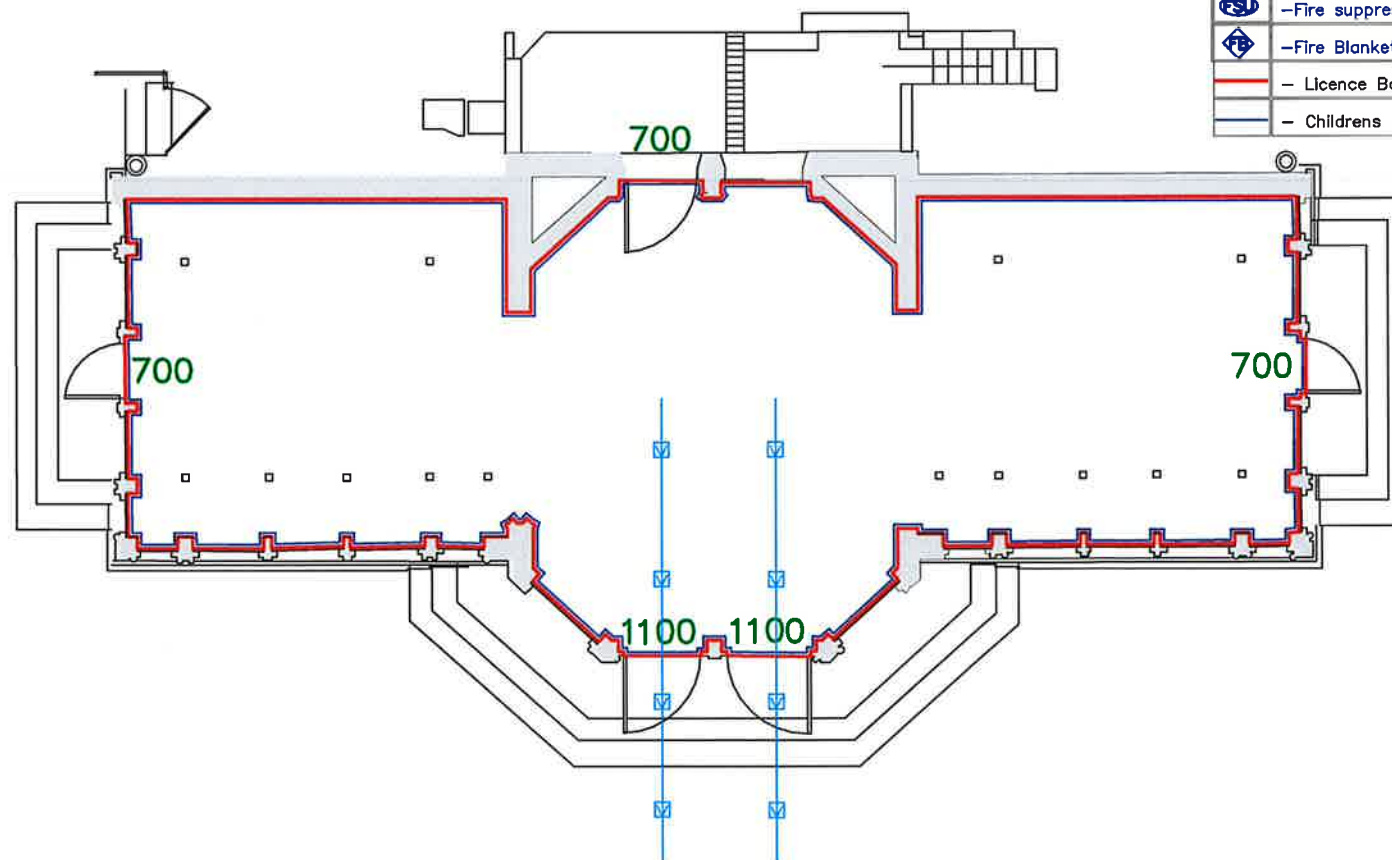
**The National Trust  
for Scotland**

Ayrshire Properties Service Base,  
Culzean Castle & Country Park  
nr Maybole, KA19 8LE Tel: 01655 884516  
Drawing Number - FD/007

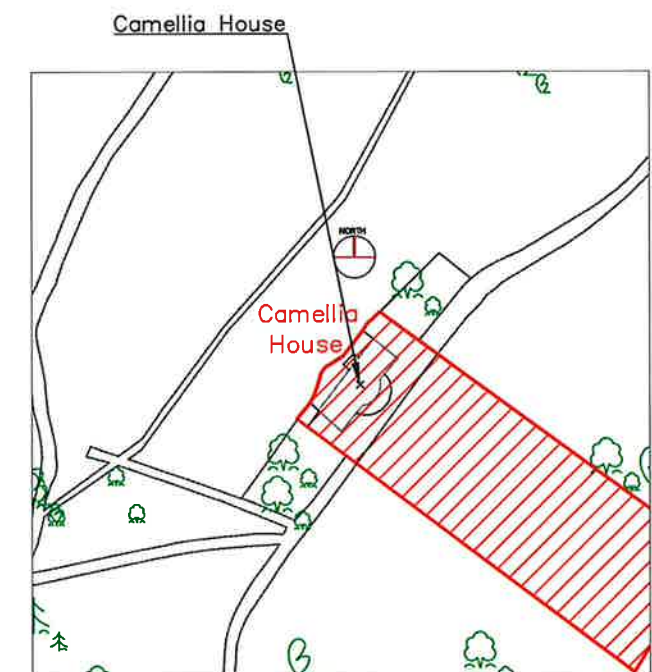


LEGEND	
	Principal Fire Escape Route
	Secondary Fire Escape Route

LEGEND	
	- Aspirated smoke detector
	- Detector with loop & address
	- Detector with sounder; loop & address
	- Aspirated detector Zone Unit
	- Break Glass Call Point
C.P.	- Control Panel - Main (Fire Alarm Panel)
R.P.	- Control Panel - Repeater (Fire Alarm Panel)
EM	- Electro-magnetic door control
	- Exterior Siren or Sounder
FIRE EXIT DOOR WIDTH SCHEDULE	
	Clear opening width at doorway in mm.
	(Clear opening width between handrails in mm)
	[Clear opening width between walls in mm]
FIRE SUPPRESSION SYMBOLS	
	- Fire extinguisher (9Ltr water)
	- Fire extinguisher (2.5Kg Foam)
	- Fire extinguisher (2.5Kg CO2)
	- Fire suppression Unit
	- Fire Blanket
	- Licence Boundary
	- Childrens etc access boundary



Camellia House – Floor Plans.  
Licence Applications – Fire Detection  
July 2015  
Scale 1:100 at A3



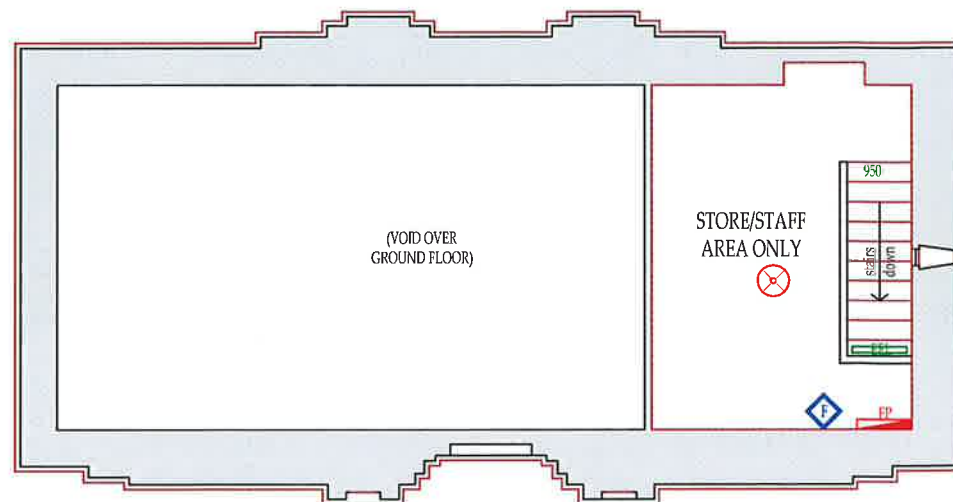
Location Plan  
Scale 1:1250



The National Trust  
for Scotland

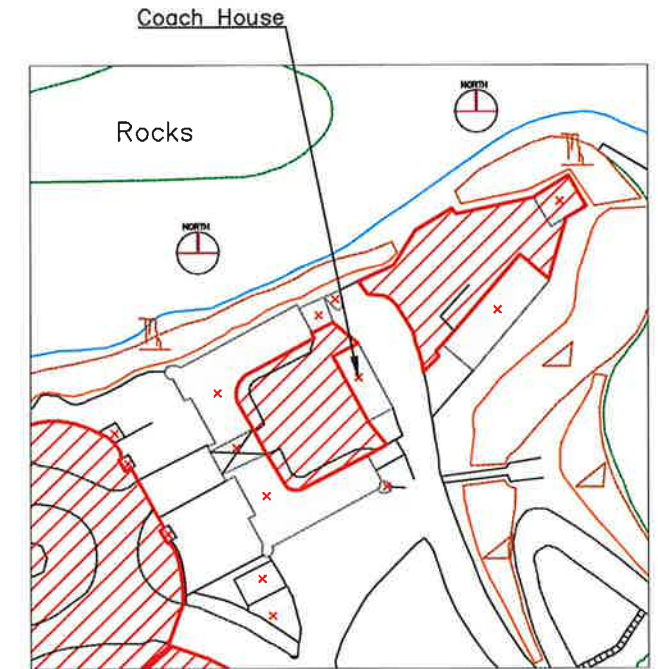
Ayrshire Properties Service Base,  
Culzean Castle & Country Park  
nr Maybole, KA19 8LE Tel: 01655 884516  
Drawing Number - FD/006



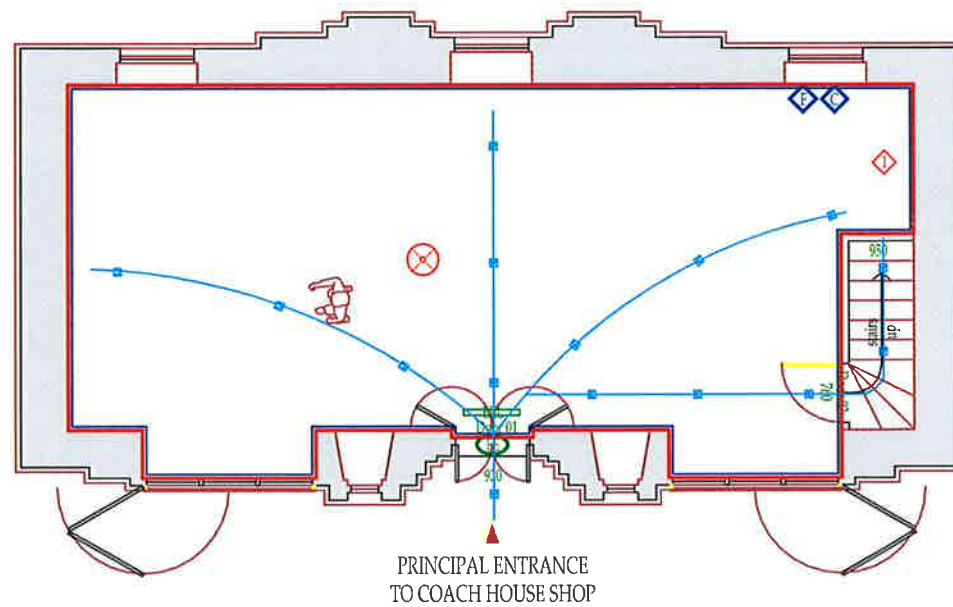


MEZZANINE LEVEL FLOOR PLAN - COACH HOUSE SHOP

LEGEND	
	- Aspirated smoke detector
	- Detector with loop & address
	- Detector with sounder; loop & address
	- Aspirated detector Zone Unit
	- Break Glass Call Point
	- Control Panel - Main (Fire Alarm Panel)
	- Control Panel - Repeater (Fire Alarm Panel)
	- Electro-magnetic door control
	- Exterior Siren or Sounder
FIRE EXIT DOOR WIDTH SCHEDULE	
	Clear opening width at doorway in mm.
	(Clear opening width between handrails in mm)
	[Clear opening width between walls in mm]
FIRE SUPPRESSION SYMBOLS	
	- Fire extinguisher (9Ltr water)
	- Fire extinguisher (2.5Kg Foam)
	- Fire extinguisher (2.5Kg CO2)
	- Fire suppression Unit
	- Fire Blanket
	- Licence Boundry
	- Childrens etc access boundry



Location Plan  
Scale 1:1250



PRINCIPAL ENTRANCE TO COACH HOUSE SHOP

LEGEND	
	Principal Fire Escape Route
	Secondary Fire Escape Route

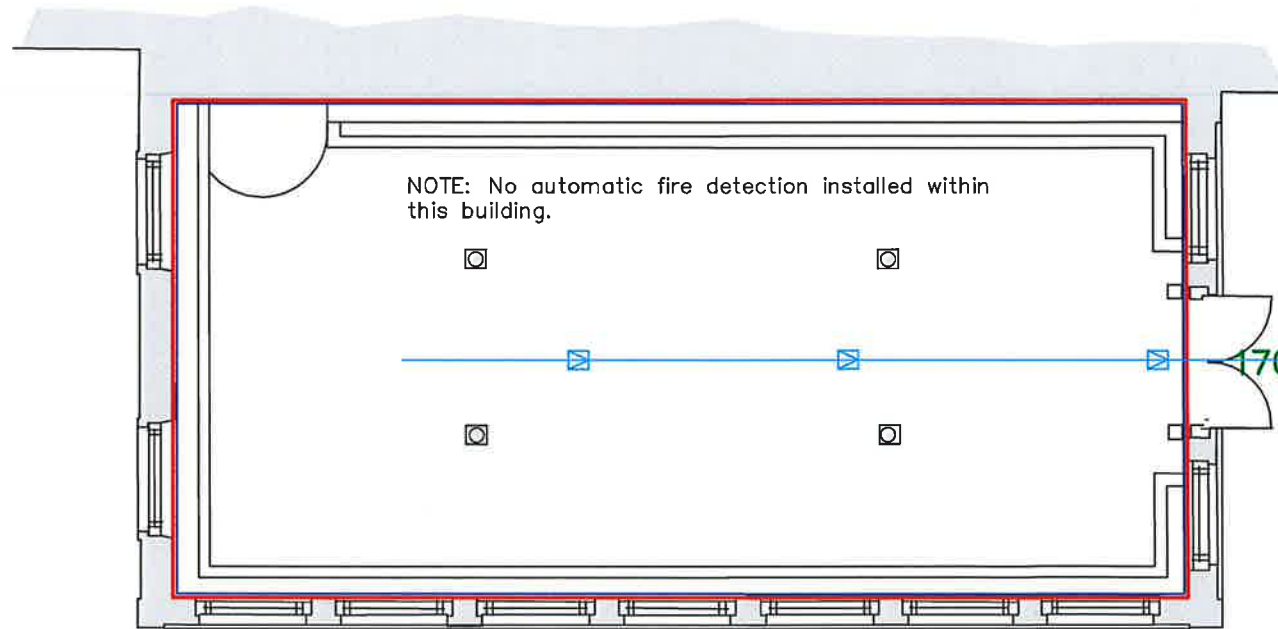
Coach House – Floor Plans.  
Licence Applications – Fire Detection  
July 2015  
Scale 1:100 at A3



The National Trust  
for Scotland

Ayrshire Properties Service Base,  
Culzean Castle & Country Park  
nr Maybole, KA19 8LE Tel: 01655 884516  
Drawing Number - FD/004



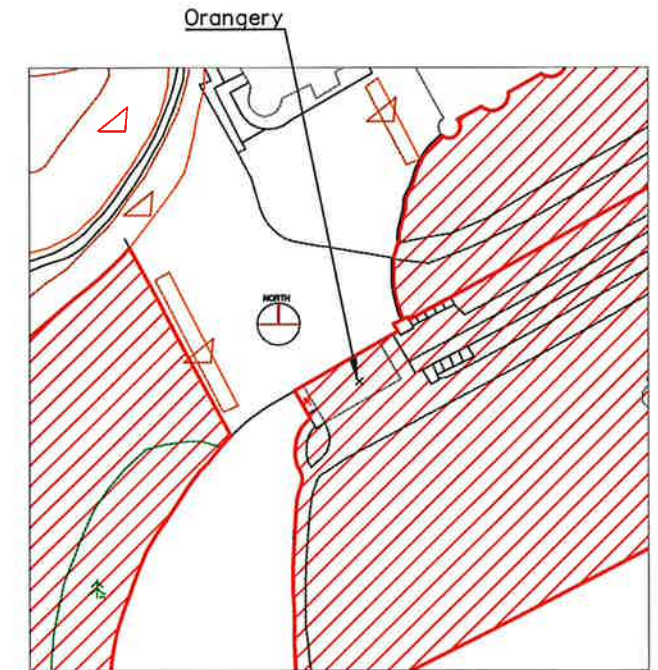


Orangery – Floor Plans.  
Licence Applications – Fire Detection  
July 2015  
Scale 1:100 at A3



LEGEND	
	- Aspirated smoke detector
	- Detector with loop & address
	- Detector with sounder; loop & address
	- Aspirated detector Zone Unit
	- Break Glass Call Point
C.P.	- Control Panel – Main (Fire Alarm Panel)
R.P.	- Control Panel – Repeater (Fire Alarm Panel)
EM	- Electro-magnetic door control
	- Exterior Siren or Sounder
FIRE EXIT DOOR WIDTH SCHEDULE	
	Clear opening width at doorway in mm.
	(Clear opening width between handrails in mm)
	[Clear opening width between walls in mm]
FIRE SUPPRESSION SYMBOLS	
	- Fire extinguisher (9Ltr water)
	- Fire extinguisher (2.5Kg Foam)
	- Fire extinguisher (2.5Kg CO2)
	- Fire suppression Unit
	- Fire Blanket
	- Licence Boundry
	- Childrens etc access boundry

LEGEND	
	Principal Fire Escape Route
	Secondary Fire Escape Route



Location Plan  
Scale 1:1250



The National Trust  
for Scotland

Ayrshire Properties Service Base,  
Culzean Castle & Country Park  
nr Maybole, KA19 8LE Tel: 01655 884516  
Drawing Number - FD/005