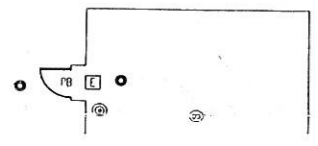
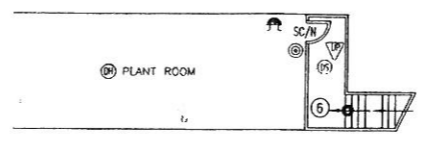
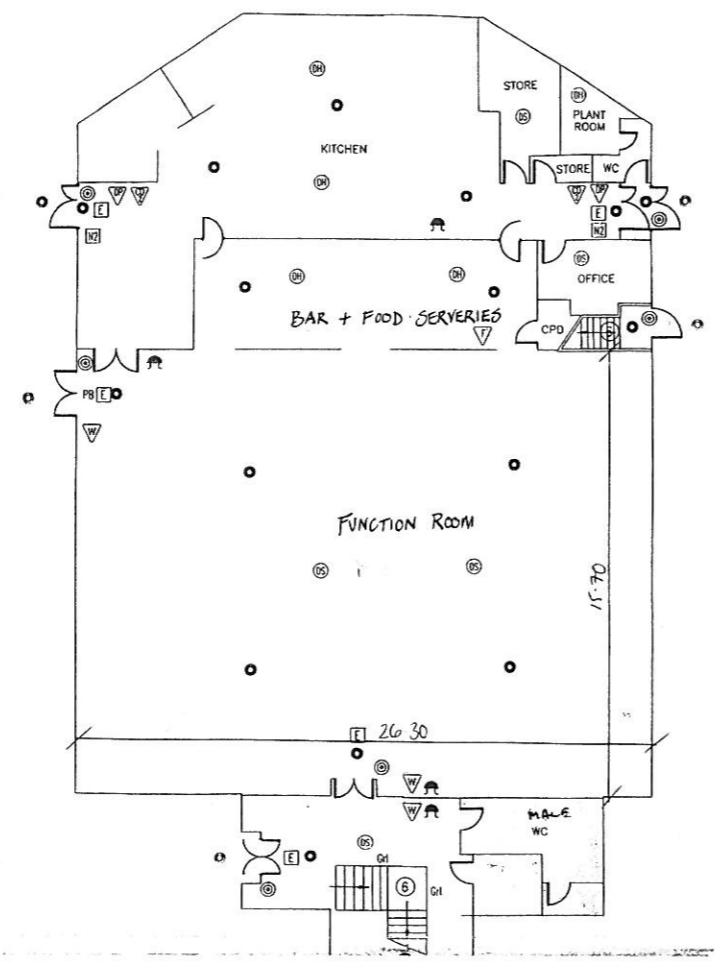
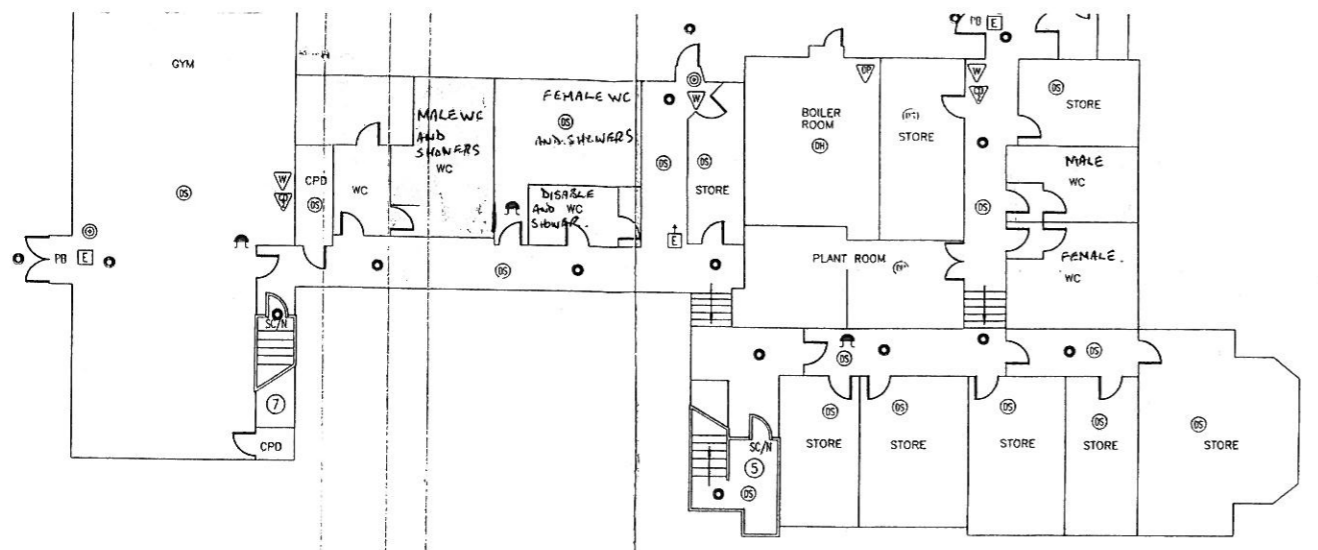


Denotes Areas Accessed By Children + Young Persons.

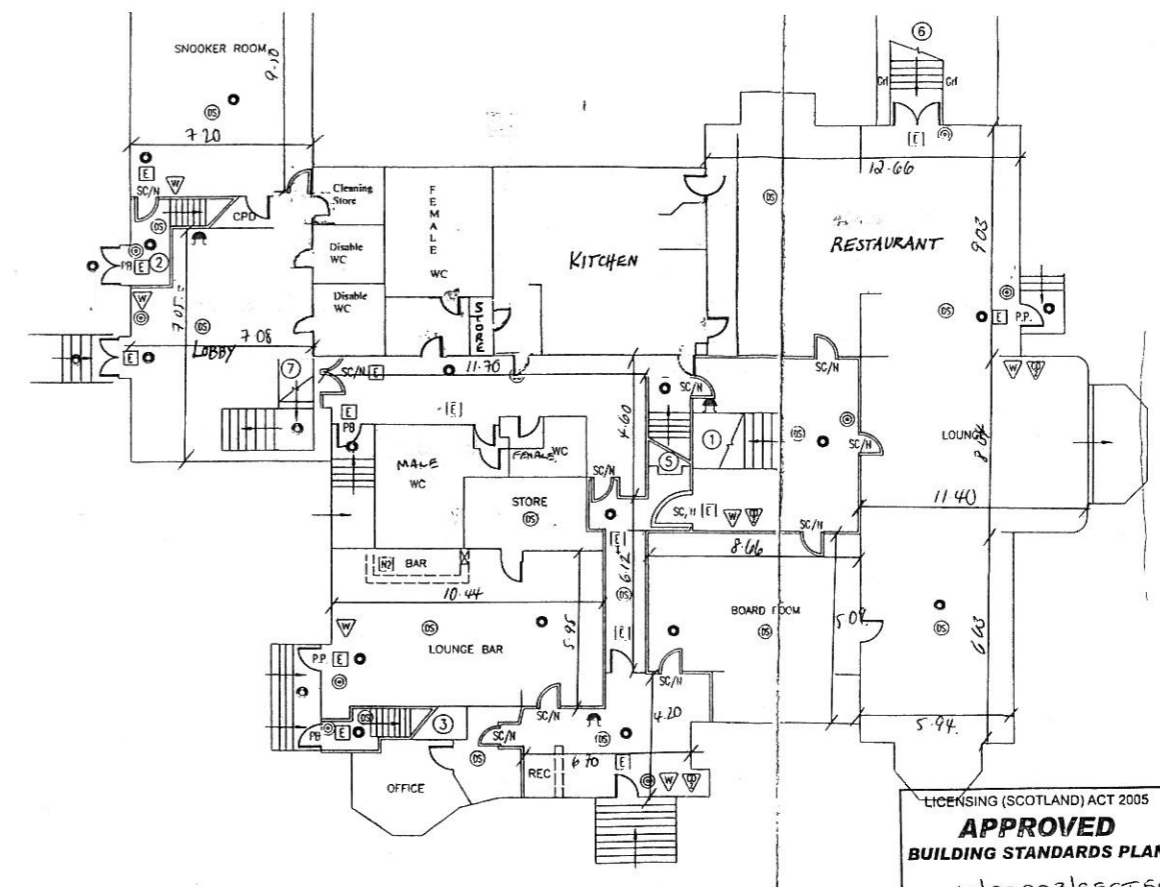
DURFEAN APPLIES



- P.P. PUSH PAD TO OPEN
- GR GUARDRAIL
- E GRAPHIC/PICTORIAL EXIT SIGN WITH DIRECTION ARROW 75mm
- SC SELF CLOSING DOOR
- FA FIRE ALARM SOUNDER
- EL EMERGENCY LIGHTING POINT
- FC FIRE ALARM CALL POINT



LOWER GROUND FLOOR



GROUND FLOOR

- PB PUSH BAR TO OPEN (50 mm)
- E GRAPHIC/PICTORIAL EXIT SIGN 75mm
- DP DRY POWDER EXTINGUISHER (2.3 Kg)
- FE FOAM EXTINGUISHER (6 Litres)
- CD CARBON DIOXIDE EXTINGUISHER (2.3 Kg)
- SN STAFF FIRE ACTION NOTICE
- W WATER EXTINGUISHER (9 Litres)
- SC/N SELF CLOSING DOOR WITH FIRE DOOR KEEP SHUT NOTICE 5mm
- 60mins MIN FIRE RESISTING CONSTRUCTION
- 30mins MIN FIRE RESISTING DOORS

LICENSING (SCOTLAND) ACT 2005
APPROVED
BUILDING STANDARDS PLAN
 Ref. No. 10/00003/SECT 50
 Date 14/5/10
 Signed [Signature]

STRATHCLYDE FIRE BRIGADE
 THIS PLAN FORMS PART OF CERTIFICATE No.
 DATE OF ISSUE
 DRAWING No. \D1\0321 DWG
 APPROXIMATE SCALE 1:150
 NAME AND ADDRESS OF PREMISES
ADAMTON HOUSE HOTEL
 ADAMTON HOUSE HOTEL
 MONKTON
 KA9 2LQ
GROUND AND LOWER GROUND FLOOR PLANS
 Notes 2009