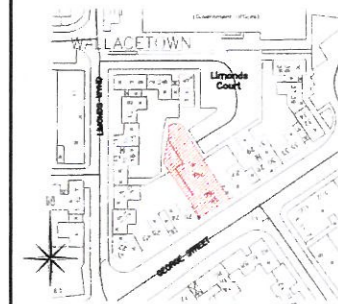


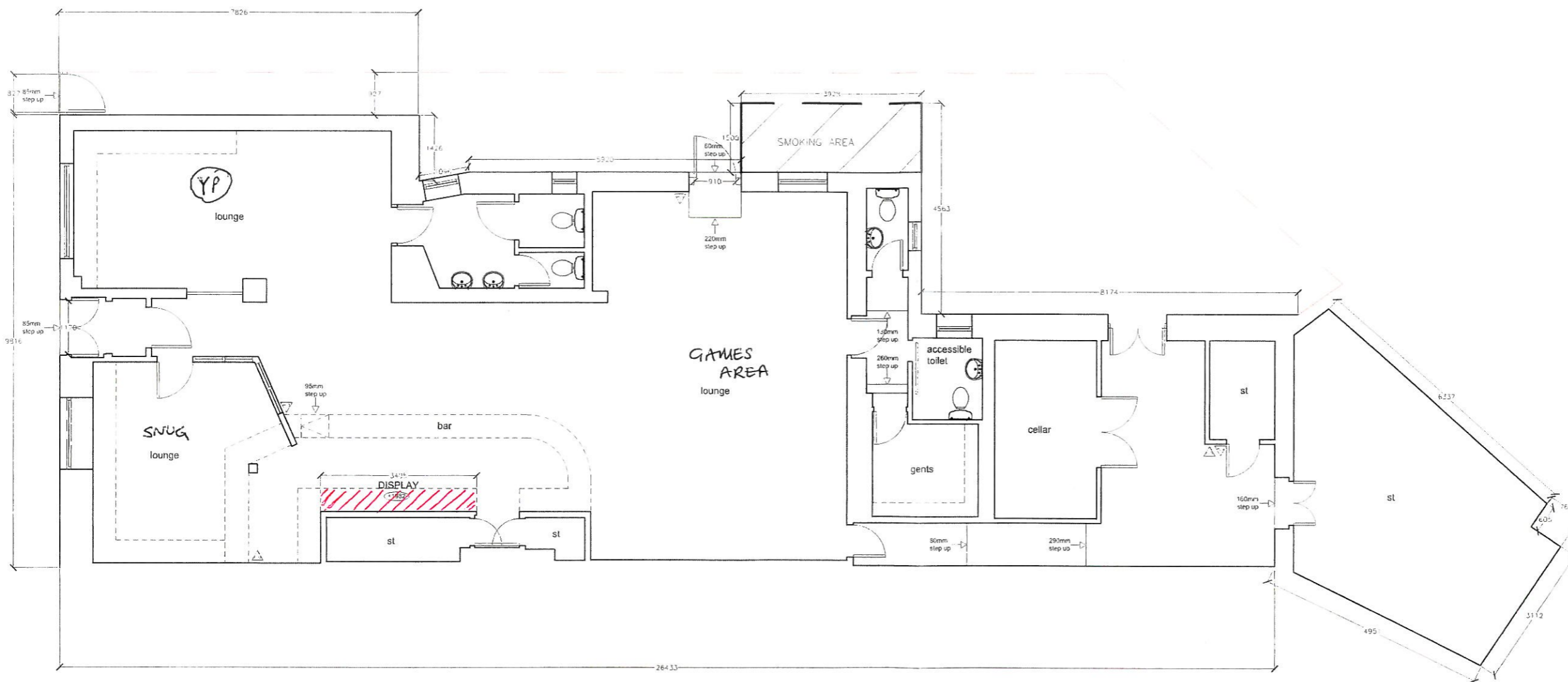
This drawing is the property of the CF Technical Services. Copyright is reserved by them and the drawing is issued on the condition that it is not copied, reproduced, retained or disclosed to any unauthorised person, either wholly or in part without the consent in writing of the CF Technical Services.  
 N.B. any variations between stated dimensions and site dimensions should be reported prior to work being executed.



LOCATION PLAN  
SCALE 1:1250

Schedule of optional information	
Number of Storeys	1
Staff Accommodation	0
Letting rooms with mini bar	0
Letting rooms without mini bar	0
Dance Area	None
Live music	None
Fire Alarm	No
Children licensed area	No
Outdoor drinking area	No
OT Saver	None

- +2600 CEILING HEIGHT
- EMERGENCY EXIT LIGHT
  - EMERGENCY EXIT SIGN
  - SMOKE DETECTOR
  - HEAT DETECTOR
  - FIRE EXTINGUISHER CO
  - FIRE EXTINGUISHER CHEMICAL
  - FIRE EXTINGUISHER WATER
  - FIRE EXTINGUISHER POWDER
  - BREAK GLASS CALL POINT
  - KLAXON FIRE SOUNDER



Ref	Date	Description	By
A	MAR 09	AM UPDATES	BWLD

SCOTTISH AND NEWCASTLE

Project  
HORSESHOE BAR  
81 GEORGE STREET  
AYR  
KA8 0AQ

Title  
FLOOR PLAN

Drawing No.	Rev.	Scale
HORSESHOE-LP-01	A	A1-1:50
Date	Drawn by	Checked by
DEC 2007	CC	DF

**CF Technical Services Ltd**  
 The Clarendon Centre  
 112 Cornhill Street South  
 Glasgow  
 G4 1AA  
 Tel: 0141 427 4741  
 Fax: 0871 990 6330  
 e-mail: cava3@technicalservices.co.uk