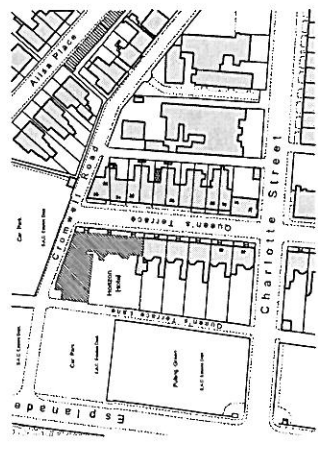


# HORIZON HOTEL



Location Plan scale : 1/1250

**CARRICKS DARLEY HAY ARCHITECTS**

**Horizon Hotel (Ayr) Ltd.**

**Horizon Hotel**  
Explanade, Ayr

Ground Floor Plan

DRG.No. 08.140 : LB01

SCALE: 1:100 DATE: Jan. 08

BY: RO

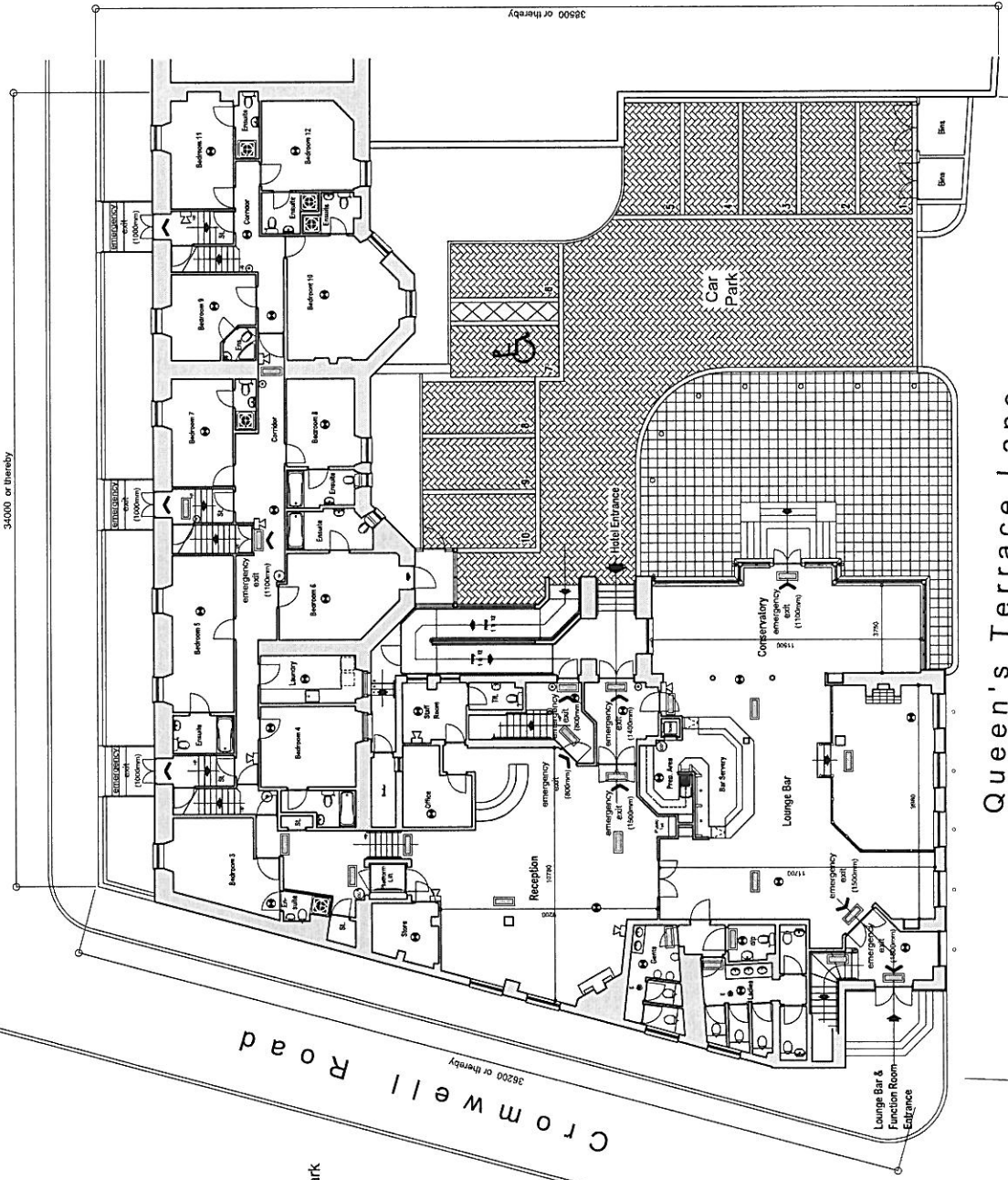
\* web : [www.carricksdarleyhay.com](http://www.carricksdarleyhay.com)

7 Ayr Road, Ayr, Scotland KA6 4JZ  
Tel : 01793 20000  
Fax : 01793 20010

- Electrical Legend :**
- Break Glass Point
  - ⊗ Smoke Detector
  - ⊕ Sounder
  - ⊙ Emergency Light Fitting
  - ⊞ Emergency Light Fitting
  - ⊖ 3L water extinguisher
  - ⊖ 2kg carbon dioxide extinguisher
  - ⊖ 6kg dry powder extinguisher

Queen's Terrace

34000 or thereby



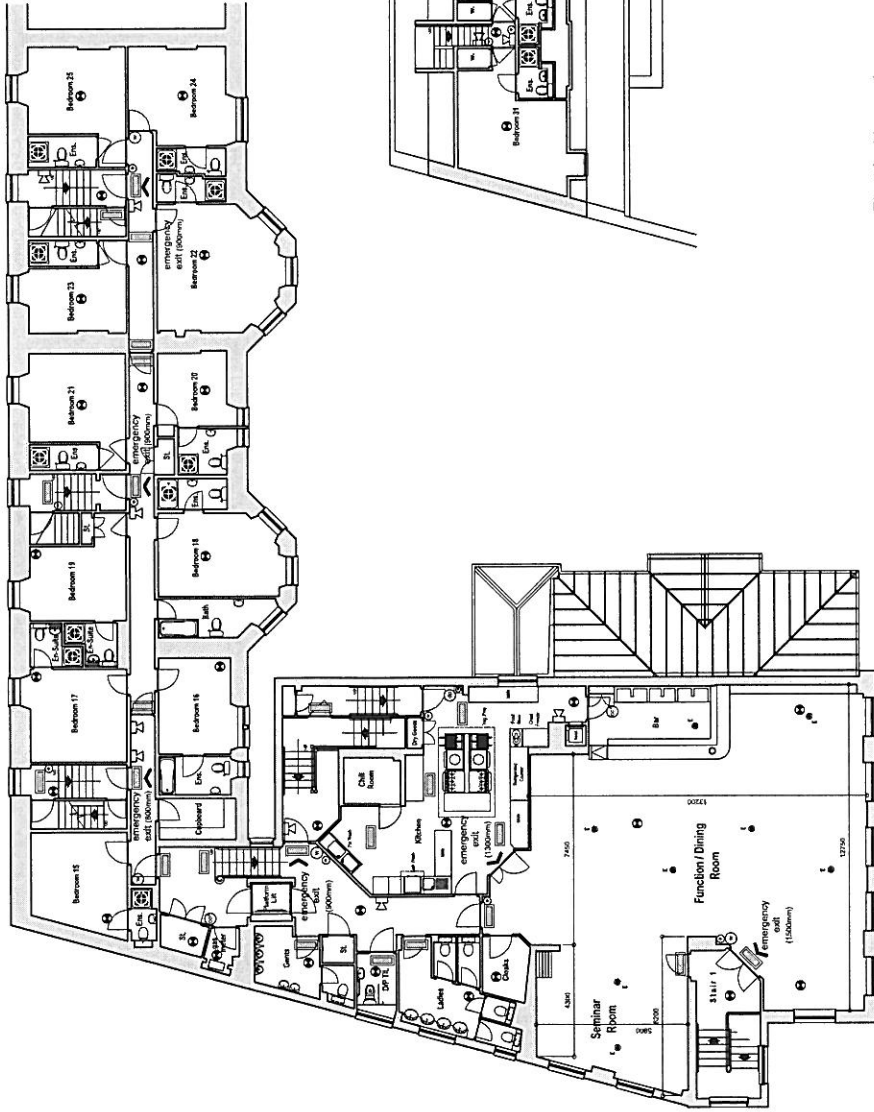
Queen's Terrace Lane

41900 or thereby

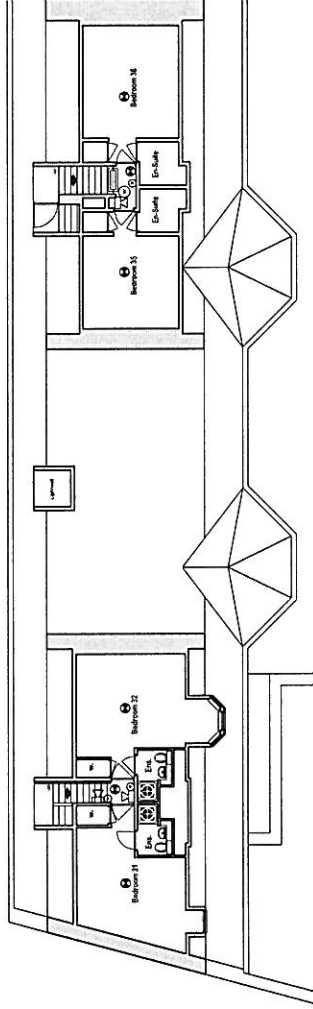
Public Car Park

# Ground Floor Plan

Public Car Park



## First Floor Plan



## Second Floor Plan

**Electrical Legend :**

- Break Glass Point
- ⊗ Smoke Detector
- ⊞ Sounder
- E Emergency Light Fitting
- ▭ Emergency Light Fitting
- ⊞ 3L water extinguisher
- ⊞ 2kg carbon dioxide extinguisher
- ⊞ 8kg dry powder extinguisher



**CARRICKS  
DARLEY HAY  
CHARTERED ARCHITECTS**

CLIENT	Horizon Hotel (Ayr) Ltd.
PROJECT	Horizon Hotel Esplanade, Ayr
DRAWING	First & Second Floor Plans
DRG.No.	08.140 : LB02
SCALE	1:100
DATE	Jan. 08
DRN. BY	RO
RO	

7, ALBERT PLACE  
 GLASGOW G2 3JN  
 TEL: (01226) 262008  
 FAX: (01226) 262008  
 www.carricksdarleyhay.com