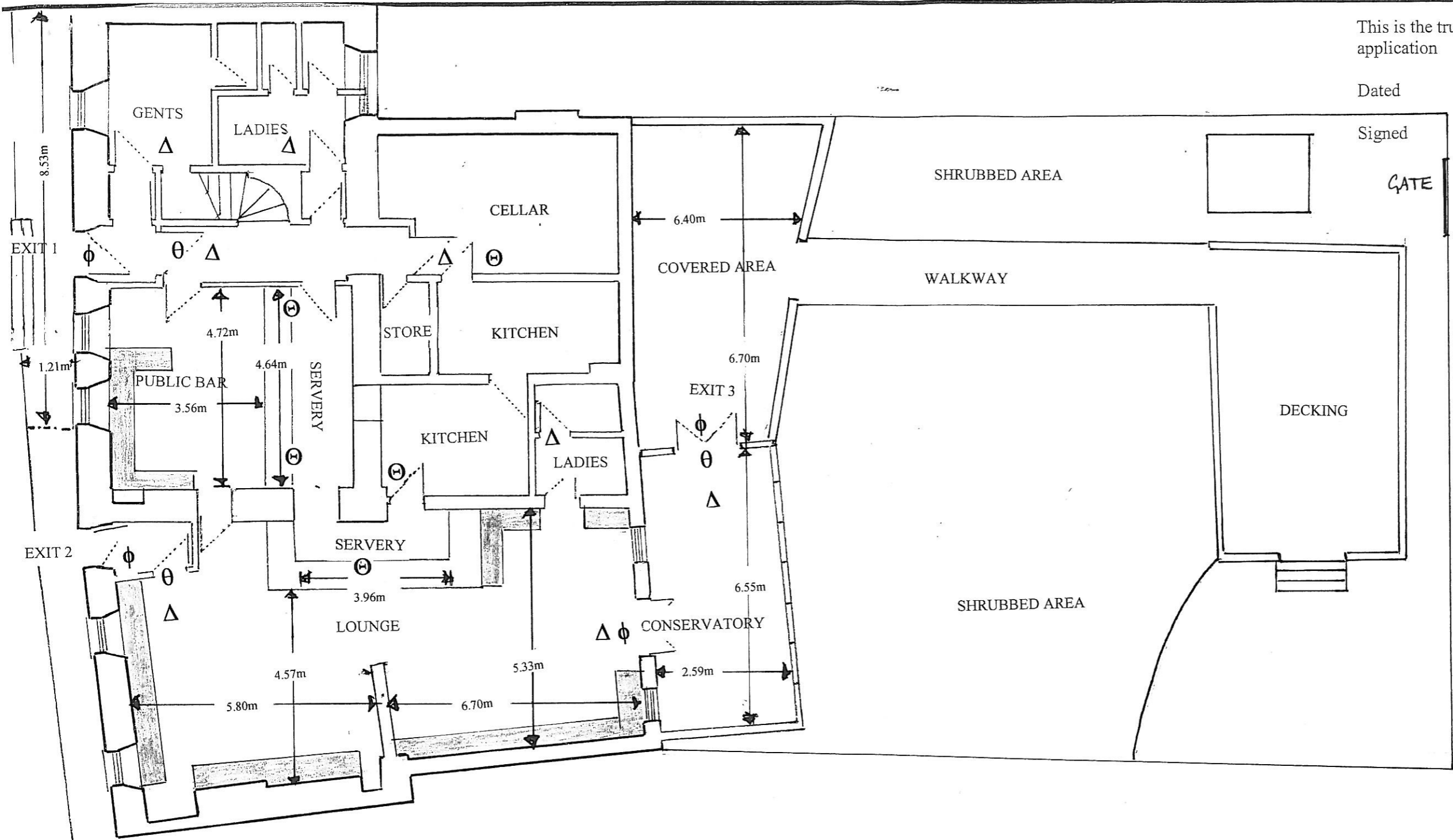


This is the true copy of the plan in my application

Dated

Signed

GATE



- ⊖ Emergency Exit Light
- ⊕ Emergency Exit
- △ Emergency Lighting
- ⊖ Fire Extinguisher

EXIT 1 Public entry, Emergency exit, to Welltrees Street. 900mm wide
EXIT 2 Emergency exit to Welltrees street. 900mm wide.
EXIT 3 Emergency exit to Rear Licensed Area 1200mm wide.

NOTES

1. This series of plans is produced for Local Authority Licence purposes.
2. Do not scale from plans.
3. Do not use plans for the purpose of ordering materials. All dimensions must be accurately measured on site.

WELLTREES INN 11 9 WELLTREES STREET, MAYBOLE		
Title GENERAL PLAN		
Scale 1:100	Date Nov 07	Drawn JB
Drg NoWELL//002		