

Site Plan Scale 1:1250

Children and young persons are permitted access to all public parts of the premises

Number Of Units	Bay/Fixture	Height	Width	Depth	M2
0	Side Rack	1720	610	300	0.00000
Total Display Units Capacity					0.00000
0	1000 Fixture	1410	1000	470	0.00000
1.00	800 Fixture	1410	800	470	1.12800
2.00	Kiosk Kit	1800	1000	300	3.60000
0.00	1250 Panama fridge bay	1800	1250	750	0.00000
0.00	937 Panama fridge bay	1800	937	750	0.00000
2.00	1250 Pearl M fridge bay	1800	1250	750	4.50000
0.00	937 Pearl M fridge bay	1800	937	750	0.00000
Total Shelving Capacity					9.22800
Miscellaneous BWS Display Base					
Visible Display	Display Base	2200	610	610	0.00000
0					
Total Department Capacity					9.22800

Key - Drawing Information

[Red Hatched Box]	FIXTURE LICENCED FOR SALE OF ALCOHOL - ACCESSIBLE
[Green Hatched Box]	FIXTURE LICENCED FOR SALE OF ALCOHOL - INACCESSIBLE
[Blue Line]	BOUNDARY OF PREMISES SALES FLOOR
[Yellow Line]	LOCATION OF PREMISES ON SITE PLAN

Key - Fire Symbols

[Square with X]	NOTICE - 'FIRE DOOR-KEEP CLOSED'
[Square with X]	NOTICE - 'KEEP LOCKED'
[Square with X]	ILLUMINATED EXIT DIRECTION
[Square with X]	EXIT SIGN
[Square with X]	EMERGENCY LIGHTING
[Circle with X]	PERMitted ALARM CALL POINT
[Triangle with X]	AUDIBLE WARNING
[Circle with X]	SMOKE DETECTOR
[Circle with X]	SMOKE DETECTOR
[Square with X]	ALARM INDICATOR PANEL
[Square with X]	DOORS FITTED WITH PUSH BARS
[Square with X]	DOORS FITTED WITH PRESSURE RELEASE
[Square with X]	GLASS SHUTTER DOOR
[Triangle with X]	FIRE EXTINGUISHER - WATER TYPE
[Triangle with X]	FIRE EXTINGUISHER - FOAM TYPE
[Triangle with X]	FIRE EXTINGUISHER - CARBON DIOXIDE
[Triangle with X]	FIRE EXTINGUISHER - DRY POWDER TYPE
[Triangle with X]	FIRE EXTINGUISHER - AQUEOUS SOLUTION
[Triangle with X]	FIRE EXTINGUISHER - VAPOURISING LIQUID
[Square with X]	FIRE BLANKET
[Square with X]	FIRE HOSE REEL
[Square with X]	FIRE RESISTANT WALLS
[Square with X]	FIRE RESISTANT DOORS

NOTES:

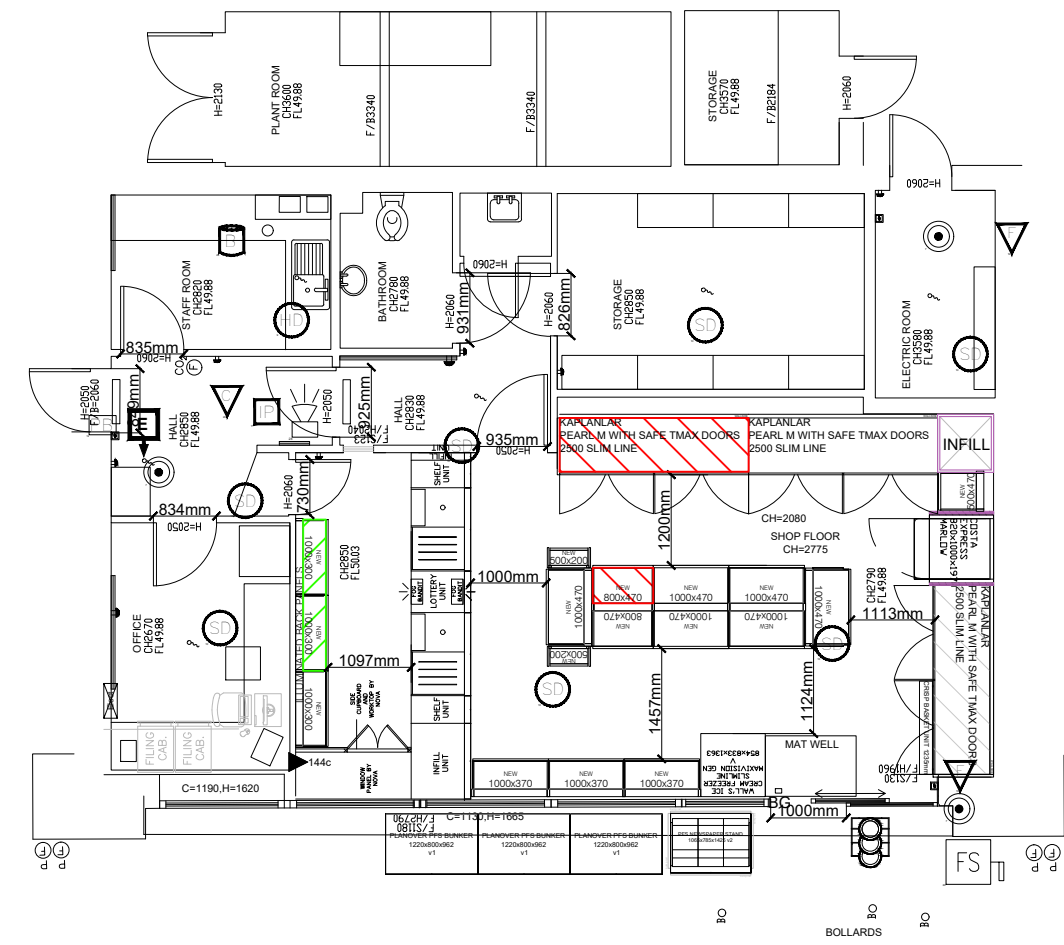
1. FIRE FIGHTING EQUIPMENT & ALL OF THE REQUIREMENTS OF THE FIRE SERVICE WILL BE INCORPORATED & WILL BE PROVIDED TO COMPLY WITH THE EUROPEAN STANDARDS

No. BSEN3 & BS7863.

FIRE STANDARDS:

- FIRE SAFETY RELATED SIGNS AND NOTICES ARE TO THE HEALTH AND SAFETY (SAFETY SIGNS & SIGNALS) REGULATIONS ACT 1996. THOSE THAT COMPLY TO BS 5499, PART 1, 1990 ALSO COMPLY.
- ILLUMINATED 'EXIT' SIGNS ARE TO CONFORM TO BS2560
- FIRE FIGHTING EQUIPMENT IS TO COMPLY WITH EUROPEAN STANDARDS BS EN3 AND BS 7863

NOTE:
TOTAL ALCOHOL DISPLAY AREA:
09,22800m²



1199 TROON

DUKES ROAD TROON KA10 6QR

SALES FLOOR

RETAIL SALES AREA 484 Sq. Ft.

Scale: 1:100

only scaled on **A3**

