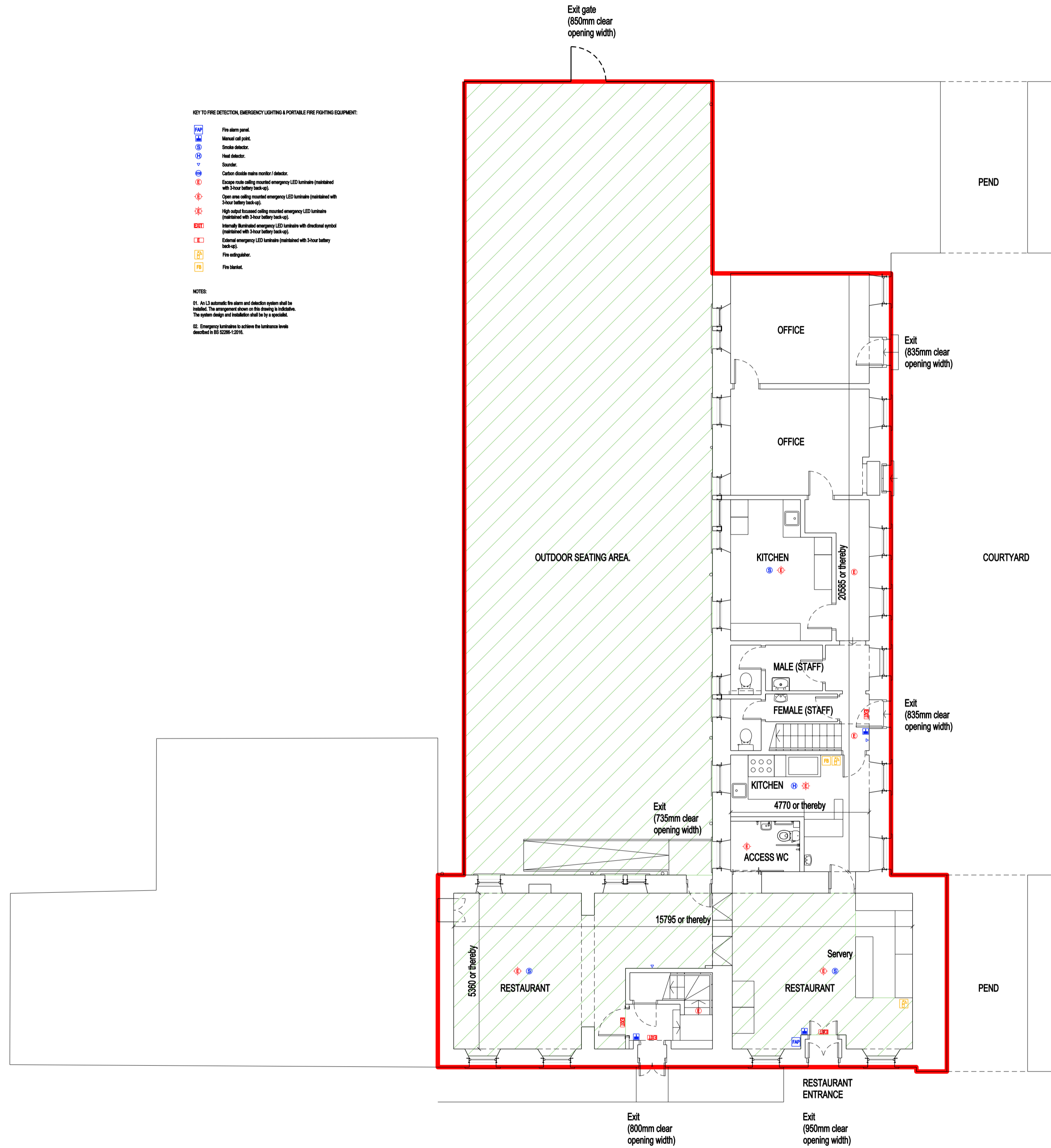


KEY TO FIRE DETECTION, EMERGENCY LIGHTING & PORTABLE FIRE FIGHTING EQUIPMENT:

- Fire alarm panel
- Manual call point
- Smoke detector
- Heat detector
- Detector
- Cabinet smoke meter (detector)
- Emergency walk-in lighting (powered emergency LED luminaires (pre-installed with 3-hour battery back-up))
- Open area walk-in lighting (powered emergency LED luminaires (pre-installed with 3-hour battery back-up))
- High-intensity focused lighting (powered emergency LED luminaires (pre-installed with 3-hour battery back-up))
- Emergency hand-held lighting (powered emergency LED luminaires with directional spread (pre-installed with 3-hour battery back-up))
- Emergency exit lighting (powered with 3-hour battery back-up)
- Fire extinguisher
- Fire bucket

NOTES:

01. An L3 automatic fire alarm and detection system shall be installed. The arrangement shown on this drawing is indicative. The exact design and installation shall be by specialist.
02. Emergency luminaires to achieve the luminance levels described in BS 5266-1:2016.



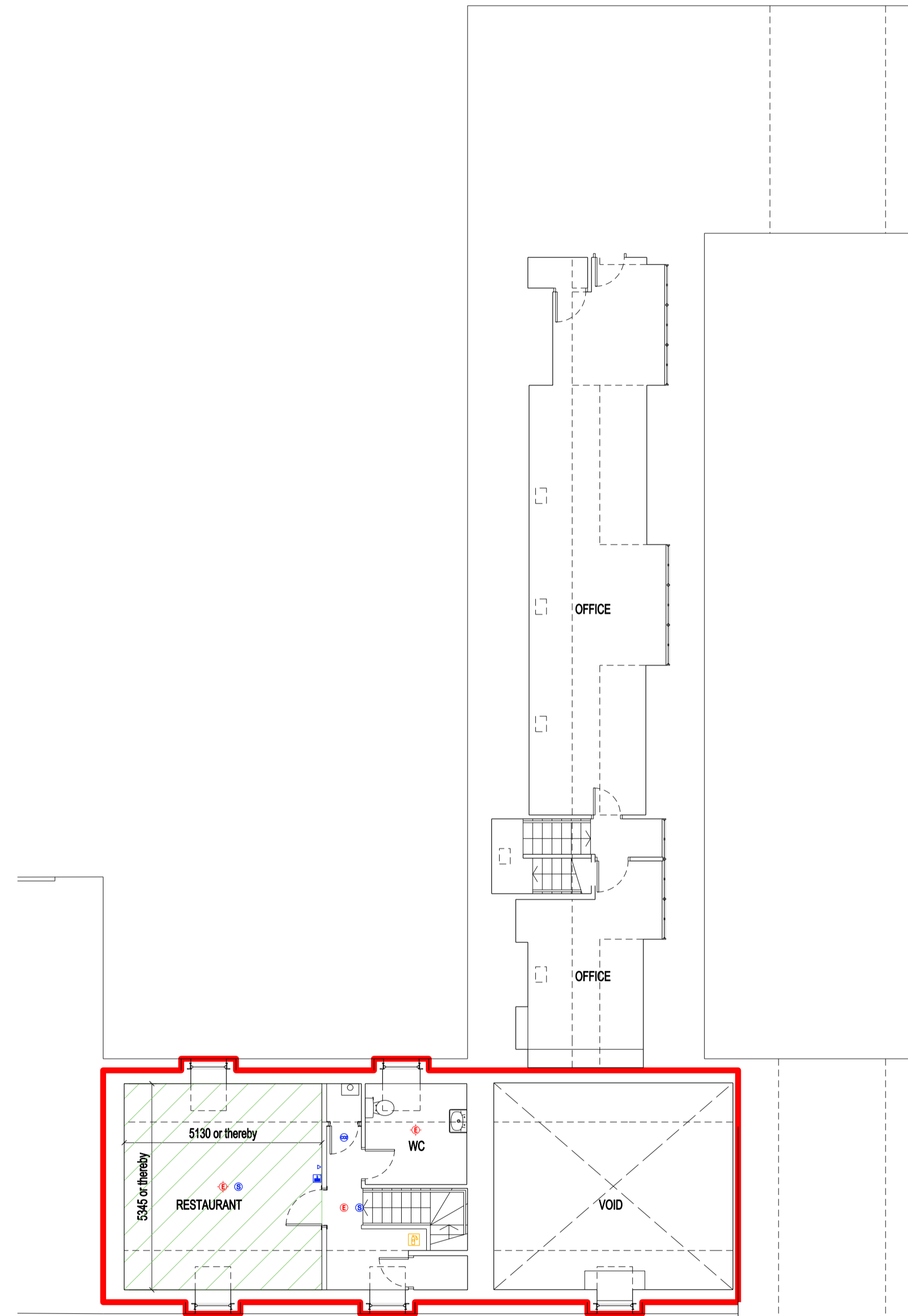
**GROUND FLOOR PLAN**

OCCUPANCY:

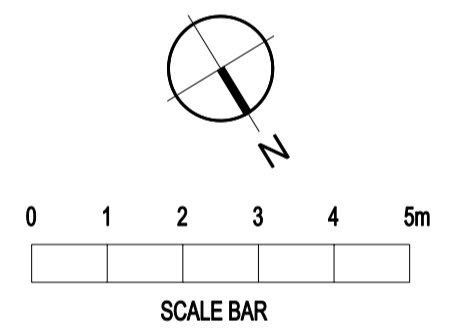
- Ground floor restaurant area = 66.6m<sup>2</sup>
- Occupancy = 20 people
- First floor restaurant area = 27.4m<sup>2</sup>
- Occupancy = 20 people
- Outdoor seating area = 258m<sup>2</sup>

KEY:

- Extent of Application. NB: patrons are all seated within the restaurant area with no standing areas proposed.
- Area to which Children and Young Persons have access.



**FIRST FLOOR PLAN**



REV.	DATE	NOTES	INIT.
A	08/02/23	DRAWING UPDATED.	AJM



CLIENT / PROJECT  
 PROPOSED RESTAURANT  
 GIBBSYARD  
 AUCHINCRIIVE ESTATE  
 DRAWING TITLE  
 PROPOSED PLANS

STATUS			
LICENSING			
DATE	DRAWN	SCALE @ A1	
JUN 2022	AJM	1:100	
PROJECT NUMBER	UNIT / BLOCK	CI / IFR	TYPE & NUMBER
9916			LC02 A

ENTASIS ARCHITECTS LLP  
 ATLANTIC CHAMBERS 1A CADOGAN STREET GLASGOW G2 6GE  
 T: 0141 221 1115 W: WWW.ENTASIS-ARCHITECTS.CO.UK

